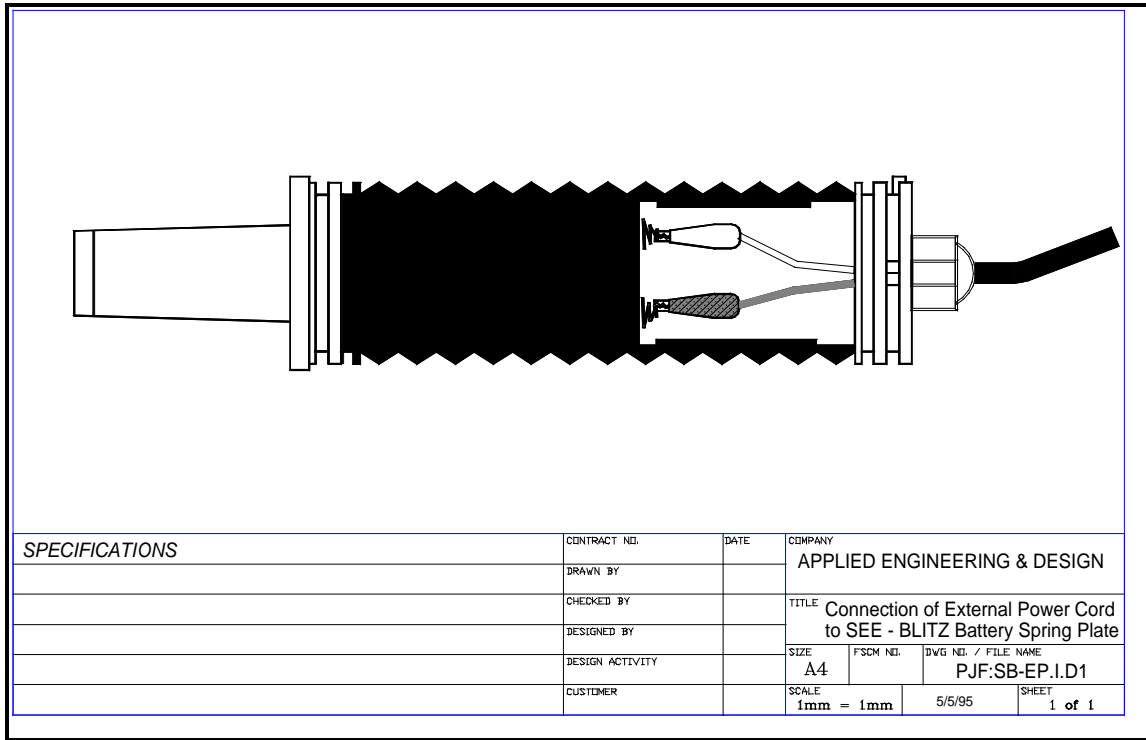


# SB - EP ( External Power Cord )

## INSTRUCTIONS



### INTRODUCTION:

The SB - EP (External Power Cord) is designed for use with Power Supplies outside of the SEE - BLITZ.

Normally this would be an extended capacity battery pack as in the SB - ESS (Emergency Heli-Pad Station) or power adapter like the SB - PC smp.

### PROCEDURE:

1. Remove normal switch.
2. With a pair of long nose pliers or similar tool grip the alligator clip so that it opens.
3. Observing the polarity as shown by the battery decals, place the Red insulated clip onto the Spring that meets the Positive (+) Battery Terminal.
4. Repeat above with the Black insulated clip onto the Spring that meets the Negative (-) Battery Terminal.

**NOTE: Ensure the Power Source is 3.0 Volt DC and the polarity is correct.**

